



# The Preserve

A S S O C I A T I O N

## Preserve Pathways Newsletter

Issue 1

JANUARY 2013

### Save the Date:

February 12 &  
March 12:

Preserve Board  
Meetings, 7:00P

February 26:  
Mexican Train,  
6:30P

February 25:  
CPR Class, 6:00P

March 30- Egg  
Hunt, 10:00 a.m.



### Learn "Hands on CPR"-No fee for this class



Come and learn the newest approach to Cardio-Pulmonary Resuscitation (CPR). Learn how more lives are being saved without mouth-to-mouth resuscitation. The survival rate used to be less than 10%, but since the change, and with more educational events the survival rate is climbing toward 50%. Learn the signs of a heart attack and stroke, and how to respond to someone who's having either.

Volunteers from the Eden Prairie Fire Department will be providing training in "Hands only CPR". Come and learn the skills so that you'll be more ready for an emergency when a friend, loved one, or a stranger needs help. This is funded by a grant to the Eden Prairie Fire Department and is free to residents in Eden Prairie.

**Date/Time: February 25 from 6:00-8:00 p.m. at the Preserve Barn.**

**Training is 1/2 hour. Sessions will run every 30 minutes.**

*Please call 952-941-8400 to RSVP so we know approximate numbers or just drop in.*

### Preserve Mugs for Sale!!

These mugs are a great gift for a family member, new neighbor, or Preserve friend. They are only \$5.00 each and can be purchased at the Preserve Center.



**We are still on track for new tennis courts this year so stay tuned....**

## Mexican Train Dominoes Night

**When:** Tuesday, February 26

**What:** Adult night out with your friends to enjoy a game of Mexican Train (dominoes)

**Time:** 6:30-9:00 p.m.

**Where:** Preserve Center

**Cost:** \$5.00 per person for snacks/water and prizes (payment at the door)

**RSVP:** By Feb. 21; 952 941-8400 or  
Barbara@preserveassociation.com

**BYOB** - cups provided

Fun for novice & experienced players!!!



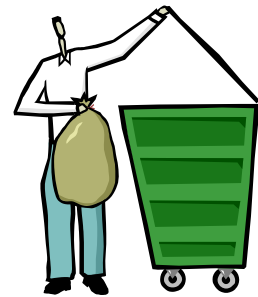
## Preserve Walking Paths

The Preserve does not use chemicals, salt or sand on the walking paths so please walk carefully as they may be slippery.



## Eden Prairie Garbage Can Ordinance

Please be respectful of your neighbors and adhere to these city rules!



Trash, yard waste and recycling containers may not be stored outside in the open, but must be stored inside the garage or screened from public view. This is a city ordinance.

## Preserve to Start a New Book Club



We are trying something new and invite you to be part of The Preserve Book Club. Once a month on the 3<sup>rd</sup> Wednesday we will hold a book discussion. The first book we have chosen is "Around the World on Two Wheels: Annie Londonderry's Extraordinary Ride" by Peter Zheutlin. Published in 2008, it's about a women in 1894 who decided to bike around the world.

After the first gathering the group will choose future books. This is a new startup and we are hopeful you will join your neighbors and friends. The first meeting will be February 20<sup>th</sup> from 1:30 to 3 pm here at the Preserve Center Barn.

## Some of our Residents may be Interested in H.O.M.E. Program

H.O.M.E. stands for Household and Outside Maintenance for the Elderly. H.O.M.E. provides low cost services that help seniors continue to live independently in their homes. The core staff along with a network of skilled workers and volunteers provides homemaking and home maintenance services for residents 60 and older in many suburban communities of Hennepin County. Some of the work they can help with is: interior/exterior painting, minor repairs/plumbing, safety bars, house cleaning/laundry, errands and grocery shopping, snow shoveling, raking and window washing. To find out more information contact Kitty Engle 952-888-5530 or [k.engle@seniorcommunity.org](mailto:k.engle@seniorcommunity.org). The website is <http://seniorcommunity.org/h-o-m-e/>.

## Neill Lake Berm Update- Please Stay Off



Please help us out and stay off the Neill Lake Berm on the south side of Neill Lake. The City of Eden Prairie has posted signs to block the trail. We know the trail is very popular and there are many who use it on a daily basis, especially during the summer. Yes, we know it is snow covered now and easy to ignore the signs, but just walking on it during the winter months disrupts the seed and tender root growth. It is critical that it is allowed to establish itself. Most of the seed along the sides of the berm is still establishing, but the seed that was

placed along the berm top has not had a chance to take hold due to the heavy use. If the top of the berm is not well vegetated, the berm will erode and will lose strength again. If all goes as planned and the new seed establishes well, the trail will reopen in late spring, 2013. Your cooperation is appreciated by not walking around the signs while the City completes this essential work.

## Number One Local Option for Entertaining Consider your Preserve Center with brand new carpet upstairs!

If you're planning an upcoming event think local and join your neighbors who have discovered the remodeled and newly re-carpeted Preserve Community Center for your event. The friendly, warm ambiance and new conveniences make it a great venue for all sorts of activities.

The upstairs facility offers an open kitchen and food service area that is user friendly and very flexible for all types of uses. Check our website for rental rates and rules and call the office for availability. We now have speakers for background music, four high top tables, coffee maker, beverage dispenser, and various bowls/platters for an extra fee. We also have free Wi-Fi and a pull down screen in addition to our tables and chairs.

Remember, the Preserve Center is meant for use by Preserve Members.. Last year we had over 80 events from graduation and birthday parties, family reunions, grooms dinners, wedding showers, church meetings, and more.



THE PRESERVE ASSOCIATION  
11221 ANDERSON LAKES  
PKWY  
EDEN PRAIRIE, MINNESOTA  
55344-4086  
PHONE: 952-941-8400  
FAX: 952-941-4978

**Winter Office Hours**

Closed Monday  
Tuesday—Friday  
8:30 a.m.—4:30 p.m.

We're on the web at  
[preserveassociation.com](http://preserveassociation.com)

**Preserve Board of Directors**

**Ken Hallonquist, President**  
[klmoh@earthlink.net](mailto:klmoh@earthlink.net)

**Tom Heller, Vice President**  
[heller9024@earthlink.net](mailto:heller9024@earthlink.net)

**Mike Wilwerding, Treasurer**  
[mike.wilwerding@gmail.com](mailto:mike.wilwerding@gmail.com)

**Inga Borggreve, Secretary**  
[inga\\_i\\_borggreve@uhc.com](mailto:inga_i_borggreve@uhc.com)

**Bruce Hellier, Director**  
[hellierdesign@aol.com](mailto:hellierdesign@aol.com)

**Jacqueline Miller, Director**  
[jacquelinemillerlaw@gmail.com](mailto:jacquelinemillerlaw@gmail.com)

**Jan Bailey, Director**  
[jan.bailey56@yahoo.com](mailto:jan.bailey56@yahoo.com)

**Jennifer Martens, Director**  
[slmartens@aol.com](mailto:slmartens@aol.com)

**Tim Rush, Director**  
[timrushmn@hotmail.com](mailto:timrushmn@hotmail.com)

**Preserve Staff Members**

**Carol Bomben, General Manager**  
[carol@preserveassociation.com](mailto:carol@preserveassociation.com)

**Janelle Ogrins, Assistant Manager**  
[janelle@preserveassociation.com](mailto:janelle@preserveassociation.com)

**Barbara Hoveland, Adm. Asst**  
[barbara@preserveassociation.com](mailto:barbara@preserveassociation.com)

**Mary Anderson, Program Coor.**  
[MALanewood@aol.com](mailto:MALanewood@aol.com)

**Dean Swanson, Pool Engineer**

NON-PROFIT  
ORG  
US POSTAGE  
PAID  
PERMIT NO.689  
Hopkins



## Winter Greetings to our Preserve Members

(Neill Lake Photo)

## Mark your Calendar: Preserve Egg Hunt



Meet at the Preserve Barn for a fun egg hunt and treats. Preserve kids and grandkids up to age 12 are invited to attend and should be accompanied by an adult. Bags will be provided for the hunt. (Weather Permitting)

Date: Saturday, March 30

Time: 10:00 -11:00 a.m.

Location: Preserve Barn play yard